



View from Rideau River

SANDRINGHAM APARTMENTS, OTTAWA

Architects,

The Office of Page & Steele, Toronto

General Contractor,

Range Road Development Ltd

Structural Engineer,

M. S. Yolles & Associates

Mechanical Engineer

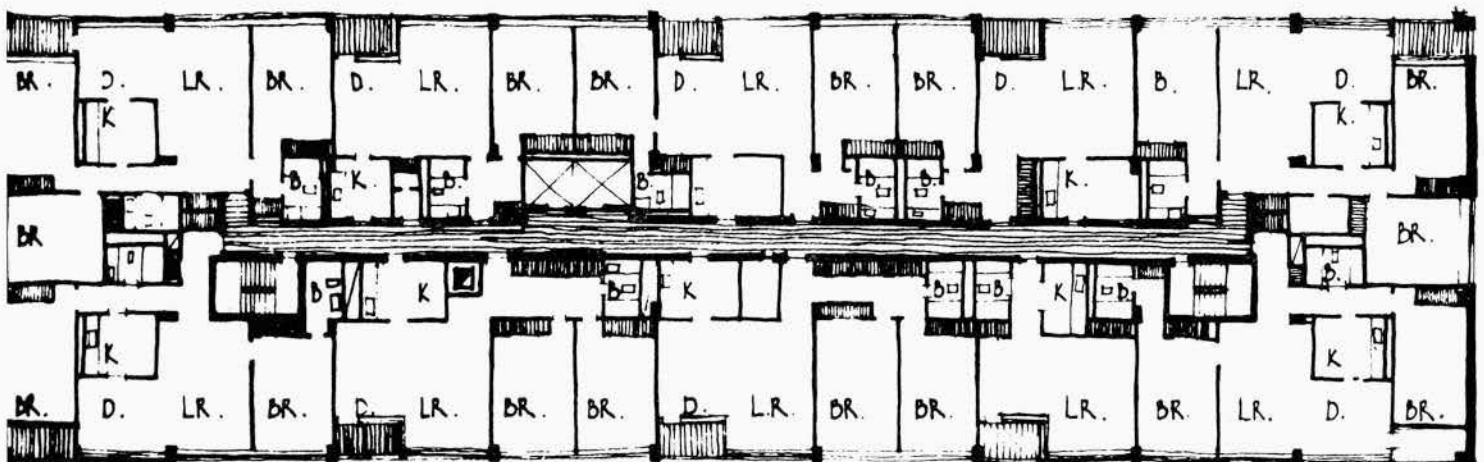
Frost, Granek & Associates

Electrical Engineer,

Jack Chisvin & Associates

This new high-rise apartment building, situated on Range Road above Sandy Hill, was completed in 1958. It offers four different types of apartments from bachelor accommodation through to three bedroom suites, together with a magnificent view over Strathcona Park and the Rideau River.

Typical Floor Plan

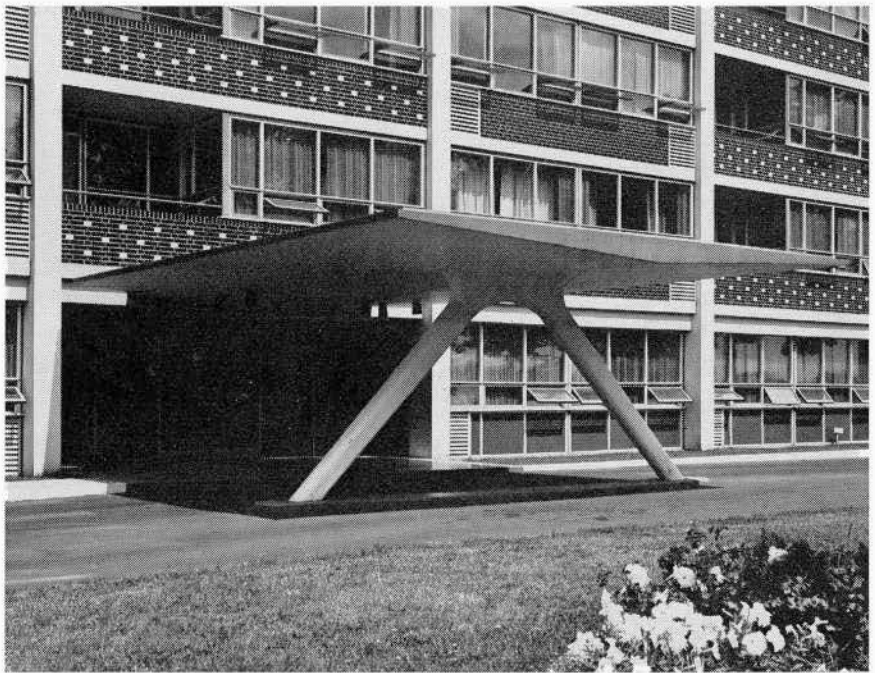


SCALE 0 6 12 18 24 48.

The 10-storey structural frame is in reinforced concrete with flat plate floor slabs, exposed on the exterior faces and finished monolithically. Spandrel panels and end walls are in coloured glazed brick, the former being patterned with contrasting headers.

The floor plan achieves compact layouts for each apartment with the minimum of corridors. Kitchens and bathrooms, located against the centre core, are mechanically ventilated, and, in nearly all cases, each bedroom has its own bathroom en suite. All apartments have balconies leading off living rooms and sheltered on three sides. A spacious entrance foyer divides the building on the first floor and gives direct access to the elevators.

The Sandringham Apartment has a total of 101 units divided into 12 bachelor, 22 one-bedroom, 49 two-bedroom and 18 three-bedroom apartments. Units vary from 540 sq. ft. for the bachelor to 1,365 sq. ft. for the three bedroom types. The gross floor area of the building is 136,400 sq. ft.



Detail of entrance

PHOTO FEATURES LTD

Close up from the south west (Range Road)



PHOTO FEATURES LTD